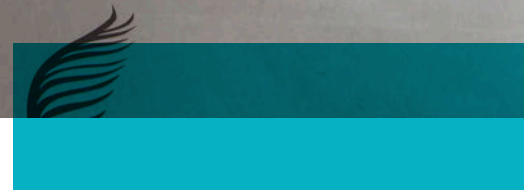


Rockfon® Sonar®

Datasheet



Rockfon® Sonar®



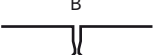
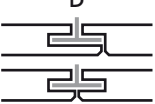


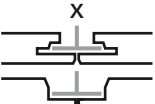
- Aesthetic white, micro-textured surface for most applications
- Highest sound absorption/Class A sound absorption and highest fire safety (Class A1)
- Full range of formats and edges for complete design freedom
- Easy to clean with a vacuum and damp cloth

Product Description

- Stone wool tile
- Visible side: micro-textured white painted fleece
- Rear side: back fleece
- Durable painted edges

Application Areas

- Office
- Healthcare
- Education
- Leisure
- Retail

Edge detail	Module size (mm)	Approximate weight (kg/m ²)	Recommended installation System
 A15	600 x 600 x 20	2.8	Rockfon® System T15 A™
	1200 x 600 x 20	2.8	Rockfon® System T15 A™
 A24	600 x 600 x 20	2.8	Chicago Metallic™ T24 1812
		2.8	Rockfon® System T24 A™
	1200 x 600 x 20	2.8	Chicago Metallic™ T24 1812
		2.8	Rockfon® System T24 A™
	1800 x 600 x 20 2400 x 600 x 25	2.8 3.4	Rockfon® System T24 A™ Rockfon® System T24 A™
 B	600 x 600 x 20	3.4	Rockfon® System B Adhesive™
	1200 x 600 x 20	3.4	Rockfon® System B Adhesive™
 D	600 x 600 x 20	3.4	Chicago Metallic™ T24 1812
		3.4	Chicago Metallic™ T24 3830
	1200 x 600 x 20	3.4	Chicago Metallic™ T24 1812
		3.4	Chicago Metallic™ T24 3830
 E15	600 x 600 x 20	2.8	Rockfon® System T15 E™
		2.8	Chicago Metallic™ T15 Decorline 3700
	1200 x 600 x 20	2.8	Rockfon® System T15 E™
		2.8	Chicago Metallic™ T15 Decorline 3700
	1800 x 600 x 20	2.8	Chicago Metallic™ T15 4070 Chicago Metallic™ T15 Decorline 3700
 E24	600 x 600 x 20	2.8	Chicago Metallic™ T24 1812
		2.8	Rockfon® System T24 E™
	1200 x 600 x 20	2.8	Chicago Metallic™ T24 1812
		2.8	Rockfon® System T24 E™
 X	600 x 600 x 22	3.7	Chicago Metallic™ T24 1812
		3.7	Chicago Metallic™ T24 3830
	1200 x 600 x 22	3.7	Chicago Metallic™ T24 1812
		3.7	Chicago Metallic™ T24 3830
	1800 x 600 x 22	3.7	Chicago Metallic™ T24 1812
		3.7	Chicago Metallic™ T24 3830



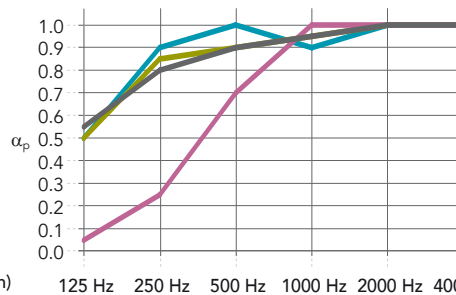
Performance



Sound absorption
 α_w : up to 1.00 (Class A)



Room to room sound insulation
 $D_{n,f,w}$ = 27 dB



Edge / Thickness (mm) /
 Suspension (incl. tile - mm)

	125 Hz	250 Hz	500 Hz	1000 Hz	2000 Hz	4000 Hz	α_w	Absorption class	NRC
A,E: 20-25 / 200	0.50	0.90	1.00	0.90	1.00	1.00	1.00	A	1.00
Other edges: 20 / 200	0.50	0.85	0.90	0.95	1.00	1.00	0.95	A	0.95
Other edges: 20 / 20	0.05	0.25	0.70	1.00	1.00	1.00	0.55	D	0.75
X: 22 / 200	0.55	0.80	0.90	0.95	1.00	1.00	0.95	A	0.95



Reaction to fire
 A1



Light reflection
 85%



Humidity and sag resistance
 Up to 100% RH.
 No visible deflection in high humidity. There will always be some dust/dirt on the panels after some time, and with regular exposure to high humidity this could lead to fungi growth. Please avoid condensation on the panel C/ON



Cleaning

- Vacuum
- Damp cloth
- Chemical resistance: resistant to diluted solutions of ammonia, chlorine and hydrogen peroxide



Hygiene
 Stone wool provides no sustenance to microorganisms



Clean Room
 ISO Class 5



Environment
 Fully recyclable stone wool
 The recycled content of Rockfon products is between 29% and 64% according to ISO 14021.
 Rockfon acoustic solutions are Cradle to Cradle Certified® Silver and Bronze (depending on product type).



Carbon footprint
 2.96 - 3.75 kg of CO2 eq.
 (cradle to gate based on EPD)



Indoor environment
 A selection of Rockfon products have been awarded the Finnish M1 emission classification for building materials and the Danish Indoor Climate Label for low emission products



09.2022 | All colour codes mentioned are based on the NCS - Natural Colour System® property of and used on license from NCS Colour AB, Stockholm 2012 or the RAL colour standard. Subject to alterations in range and product technology without prior notice. Rockfon accepts no responsibility for printing errors.

Sounds Beautiful

